

CITYRANGE[®]

CR-200Ri

PREMIUM[®]

Roughter



www.rivertekservices.com

KATO

CITYRANGE

CR-200Ri
PREMIUM
Rougher



Economy & Ecology

KATO 20 Ton City Range Crane

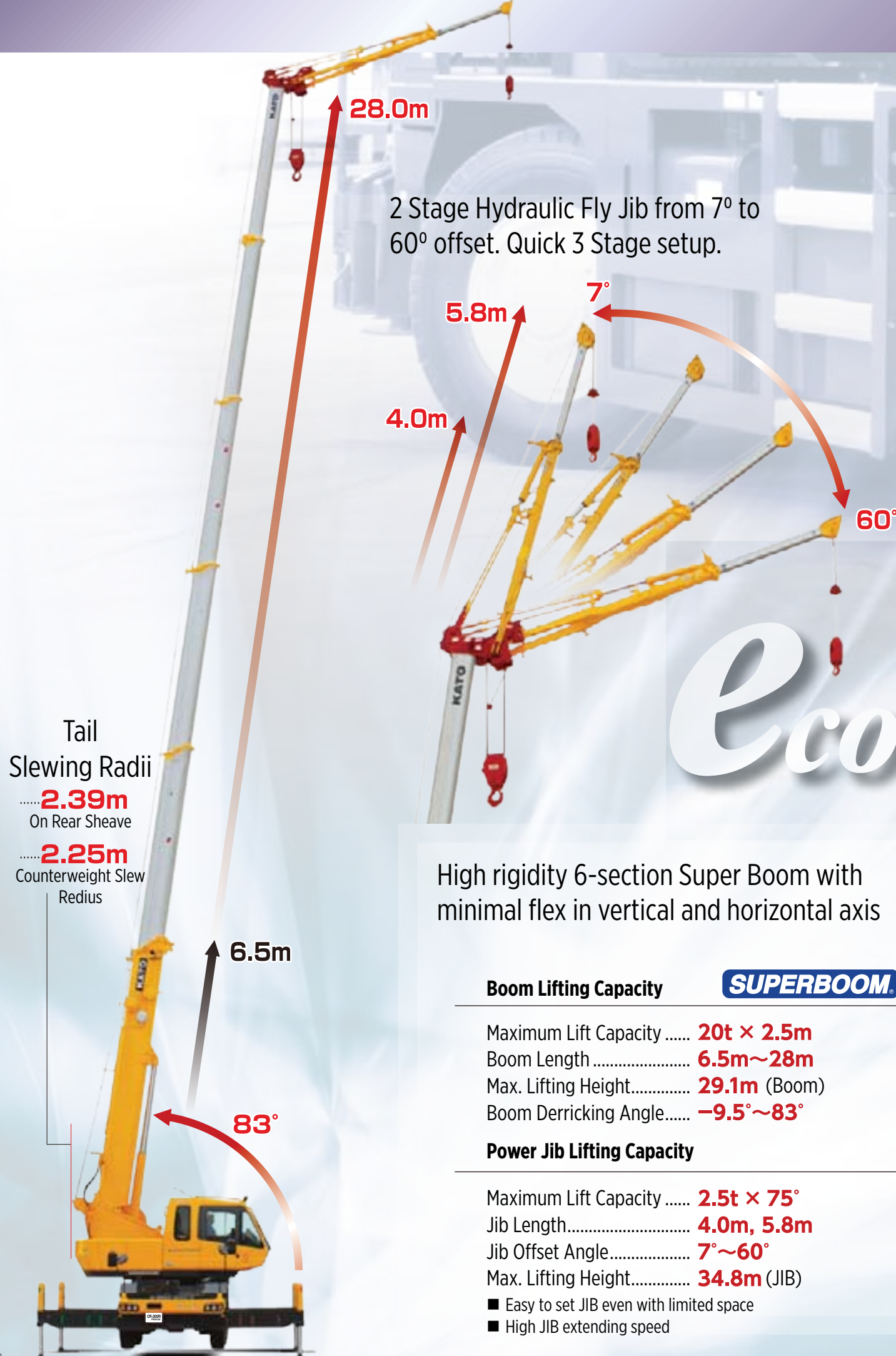
NEW Economical 20ton Crane Boasts:

- ▶ 28 Meter, 6 section rounded shape SuperBoom
 - ▶ 2 Stage (4M - 5.8M) Hydraulic Fly Jib
- ▶ Outrigger Sensors with 5 Outrigger settings with SLI automatic Adjustment
- ▶ Increased fuel efficiency with ECO Mode Option
 - ▶ Excellent Lifting Duties
- ▶ Superior and Innovative technology
 - ▶ Low owning and operating cost
 - ▶ High safety level in operation
 - ▶ More overall productivity
- ▶ A spec designed for the professional crane operator

THE LEADER IN ITS CLASS

www.rivertekservices.com

LEADING THE WAY FOR DURABILITY, SAFETY AND ECONOMY



2 Stage Hydraulic Fly Jib from 7° to 60° offset. Quick 3 Stage setup.

Tail Slewing Radii
**2.39m**
 On Rear Sheave
**2.25m**
 Counterweight Slew Radius

High rigidity 6-section Super Boom with minimal flex in vertical and horizontal axis

Boom Lifting Capacity **SUPERBOOM**

- Maximum Lift Capacity **20t × 2.5m**
- Boom Length **6.5m~28m**
- Max. Lifting Height..... **29.1m (Boom)**
- Boom Derricking Angle..... **-9.5°~83°**

Power Jib Lifting Capacity

- Maximum Lift Capacity **2.5t × 75°**
- Jib Length..... **4.0m, 5.8m**
- Jib Offset Angle..... **7°~60°**
- Max. Lifting Height..... **34.8m (JIB)**

- Easy to set JIB even with limited space
- High JIB extending speed



▲ **DRIVE MODE**

NEW Eco Touch Panel for easy operation

- DPF system display for easy monitoring control.
- Perfect engine control makes reduction of the fuel consumption by using eco switch while driving and crane operation.

Easy View touch screen colour interface

- Advanced simplicity for economy and ease of use
- Visual and audible warning systems
- Energy saves about 10%

▼ **CRANE OPERATION MODE**



Ecology Intelligence

CHOICE BETWEEN H-TYPE AND X-TYPE OUTRIGGERS
 5 intermediate O/R lengths in H-Type Models

H-TYPE OUTRIGGERS



- Min. Ext. **1.93m**
- Int. Ext. **3.20m**
- Int. Ext. **4.30m**
- Int. Ext. **4.80m**
- Max. Ext. **5.40m**

X-TYPE OUTRIGGERS



- Min. Ext. **3.20m**
- Int. Ext. **4.30m**
- Int. Ext. **4.80m**
- Max. Ext. **5.40m**

STRICT ATTENTION PAID TO ALL DETAILS FOR SAFETY

Intelligent Cabin

New model ACS (Automatic Crane System) Compuload

- Equipped with slewing automatic stop switch



Easy operation using the latest touch panel colour display

- The hook travel distance is displayed, enabling use in a wide range of conditions
- Working area limitation setting display.

OPTIMAL VISIBILITY and increased freedom and operator awareness

**GOOD LEFT SIDE VISIBILITY
REDUCES COLLISION RISK**



- Additional safety measures

Blindspot front camera (optional)



IC Card System

- Anti-theft function
- Crane running data
- Daily reports
- Connect to PC for daily reporting



Crane IC Card [KIC-S]



Spacious, ergonomic operator working area to reduce fatigue

www.rivertekservices.com

Progressive Parts



Rear access steps



Front Step



Aluminium outrigger pads



Xenon headlights



Safety wheel blocks



Blindspot front camera (optional)



Extra storage



Tool Box



Blindspot Rear camera (optional)



Aluminium side steps



Rear wheel position lights

Open winch drum inspec. point

New Cummins QSB6.7-4A (Electronically controlled common rail diesel engine)

- strict control of injection pressure and timing produces optimum fuel efficiency.
- Tier 4 Interim/Euro Stage IIIB Compliant. Flexibility Approved to October 2017

Designed for the future **KATO**

Piston displacement	6.690L
Max. Output	175kW / 2,300min⁻¹
Max. Torque.....	888N•m / 1,500min⁻¹

These specifications are subject to change without notice. Illustrations and photos show the standard models, and may or may not include optional equipment, accessories, and all standard equipment with some differences in colour and features. Before use, read and understand the Operator's Manual for proper operation. Standard and optional equipment may vary by country, so please consult your KATO dealer for details.



CR-200Ri
PREMIUM®
Roughter

CR-200Ri



Authorised Distributor

Rivertek Services Ltd.

Coolowen, Blarney, Co. Cork, Ireland.

Phone: 021 4385342/4381314 Fax: 021 4381504

Email: info@rivertekservices.com Website: www.rivertekservices.com

KATO

QUALITY & EXPERIENCE
SINCE 1895